

FZW32-12/24/40.5 Outdoor AC high voltage isolating vacuum load break switch is used for power supply network with rated voltages 12-35kV, rated current 630-1250A and rated frequency 50Hz. It can safely break the load current and break the current in some overhead lines, cable lines and capacitance current of capacitor bank in a certain distance.

The load break switch is composed of disconnecting blade, vacuum interrupter and operation mechanism. The advantage of vacuum extinguishing arc is a strong extinguishing arc ability, reliable performance, long life time, small volume. It conforms to standards of IEC62271-103.

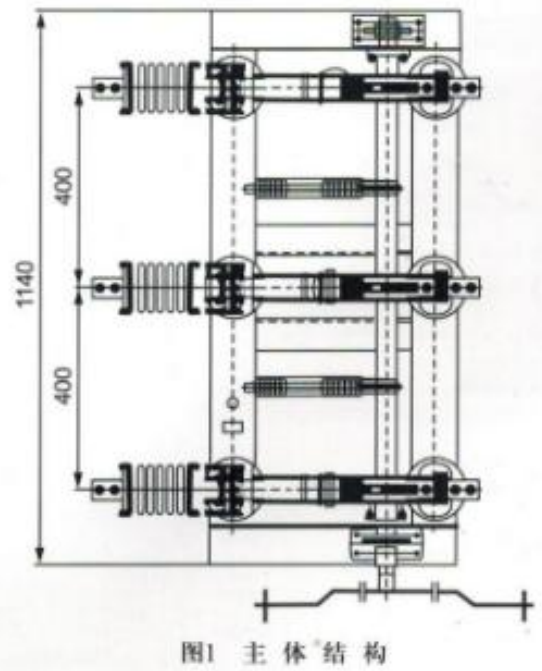
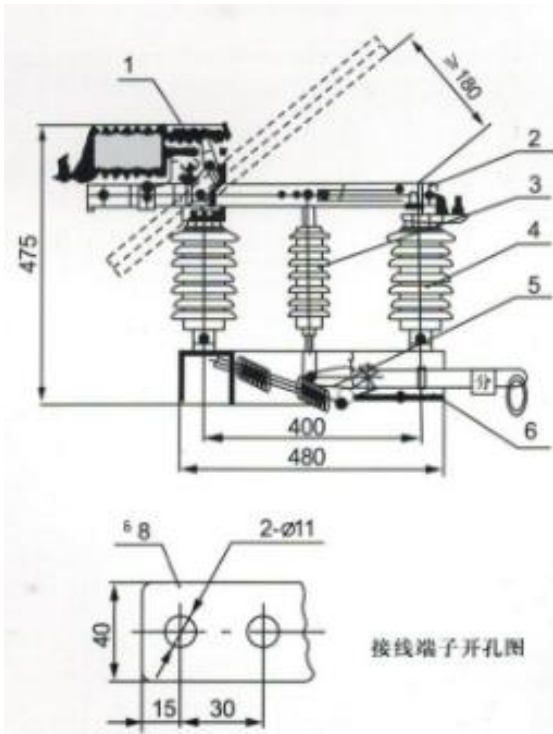
### Environment condition

- Ambient temperature: -30°C~+40°C
- Altitude: ≤3000m
- Relative humidity: monthly average ≤90%; daily average: ≤95%
- Wind pressure: ≤700Pa (equals to wind speed 34m/s)
- Air contamination degree: IV degree
- Earthquake intensity: ≤8 degree
- No corrosive or flammable gas

### Technical Data

1	Rated voltage (kV)		12/24	40.5	
2	Rated current (A)		630	1250	
3	Rated frequency (HZ)		50/60	50/60	
4	Rated peak withstand current (dynamic stability) (kA)		50	63	
5	Rated short time withstand current (thermo stability) (kA)		20	25	
6	Rated short circuit duration (s)		4	4	
7	Rated active load breaking current (A)		630	1250	
8	Rated close loop breaking current (A)		630	1250	
9	5% rated active load breaking current (A)		31.5	63	
10	Rated cable charging breaking current (A)		10	10	
11	Rated no-load transformer breaking capacity (VA)		1250	1250	
12	Main loop resistance (μΩ)		≤90	≤100	
13	1min power frequency withstand voltage (kV)	Dry	Phase to phase / Phase to earth	42/50	95
			Between fractures	49/60	115
		Wet	Phase to phase / Phase to earth	30/40	85
14	Lightning impulse withstand voltage (kV)	Phase to phase / Phase to earth		75/125	185
		Between fractures		85/145	215
15	Rated short-circuit making current (kA)		50	63	
16	Mechanical life (Times)		10000	10000	
17	Three phase closing asynchronous (ms)		≤5	≤5	
18	Direction rotating of making contact blade (mm)		≤2	≤2	
19	Main contact blade pressure (N)		300±30	420±42	
20	Distance between charged body and phase to earth (mm)		≥200	≥380	
21	Manual operating torque (Nm)		≤300	≤300	

Outline Dimension



1. Vacuum interrupter assemblies  
4. Post insulator

2. Isolation knife assembly  
5. Central spring

3. Insulated rod  
6. Underframe