

GW8(GW13)-40.5/72.5/126 series neutral point high voltage disconnecting switch is an outdoor isolator of AC50HZ, used for making and breaking transformer neutral point under no load condition.

The switch can be used CJ2 Type motor-driven operation mechanism or CS14G Type manual operation mechanism. It consists of a single pole and operation mechanism. The single pole includes foundation, support insulator, conducting arm and contact, etc. The operation mechanism realizes switching on or off of disconnecting switch through connecting rod driving conducting arm. The product conforms to IEC129, IEC694,GB1985-89.

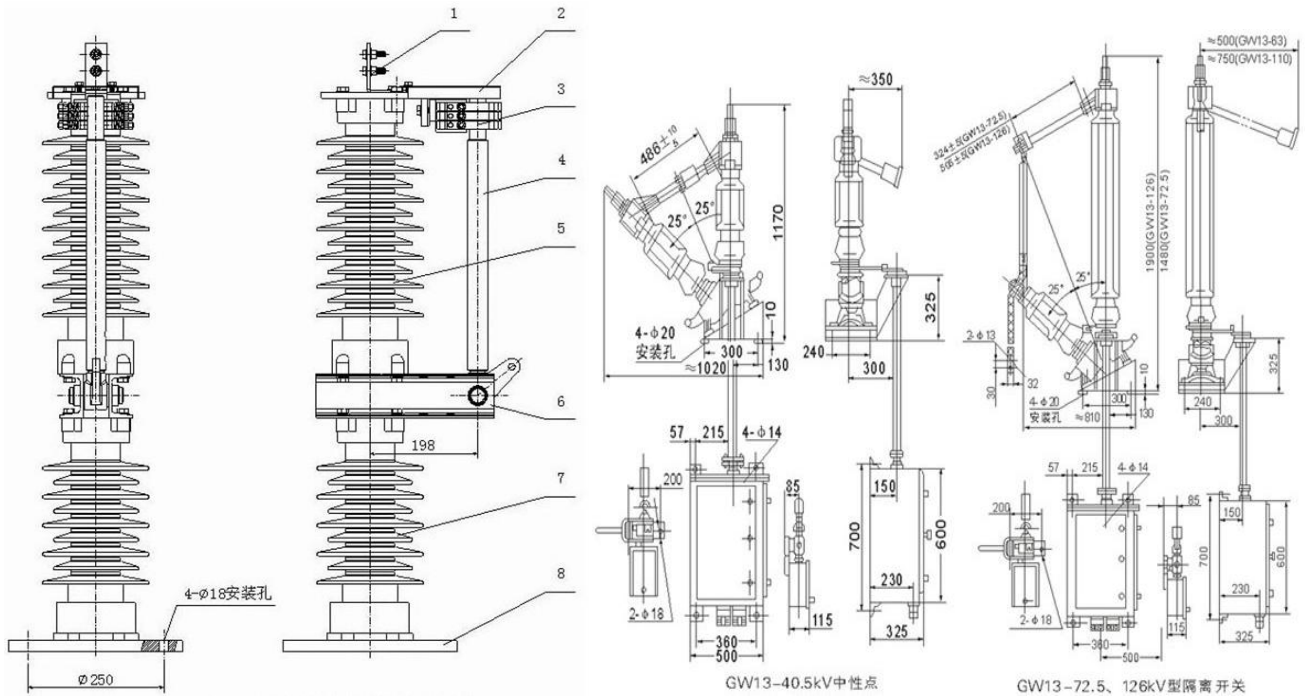
Environment condition

- Ambient temperature: max +40°C min -25°C
- Altitude: ≤1000m
- Wind pressure: ≤700Pa (equals to wind speed 34m/s)
- Air contamination degree: III degree
- Earthquake intensity: ≤8 degree
- No corrosive or flammable gas, no frequent violent vibration

Technical Data

Model		GW8			GW13			
1	Rated Voltage (kV)	40.5	72.5	126	40.5	72.5	126	
2	1min power frequency withstand voltage (kV)	85	140	230	85	160	230	
3	Lightning impulse withstand voltage (kV)	185	325	550	185	350	550	
4	Rated Current (A)	630			630, 1250, 1600			
5	Rated short time withstand Current (kA/S)	25/4			40/4			
6	Rated peak withstand current kA)	63			100			
7	Rated connect machine load (N)	750	750	1000	750	100	1250	
8	Mechanical life (Times)	2000			2000			
9	Electromotor operation mechanism	Model	CJ2			CJ2		
		Motor voltage (V)	AC380, DC220, DC110			AC380, DC220, DC110		
		Control loop voltage (V)	AC220, AC380, DC220, DC110			AC220, AC380, DC220, DC110		
		Switching time (s)	7±1			7±1		
		Output corner	180°			180°		
10	Manual operation mechanism	Model	CS14G			CS14G		
		Control loop voltage (V)	AC220			AC220		

Outline Dimension



- 1. Terminal block
- 2. Rain cover
- 3. Touch guide base
- 4. Moving contact conducting rod
- 5. Upper insulating Pillar
- 6. Bracket
- 7. Lower insulating Pillar
- 8. Chassis