

GW5 series Outdoor High Voltage disconnectors consists of three single phase, V type for each phase, symmetrical angle is 50° , disconnect switch is made of pedestal, post insulator and electric part. They are used in no-load condition to switch off the electric circuit and isolate electrical equipment, such as high voltage bus, circuit breaker etc, and high voltage line up to 252kV power system.

GW5-40.5/72.5/126/252 outdoor high voltage disconnecting switch is used to make or break high voltage circuit in rated voltage 40.5kV, 72.5kV, 126, 252kV, AC 50/60Hz electric system. It can open and close small capacitance and inductive current. This disconnecting switch accords with standards: IEC62271-103 High voltage switches. GB1985: AC High voltage disconnect switch and earthing switch and IEC 60694 & GB/T11022: Common technical requirements of HV switchgear and control equipment.

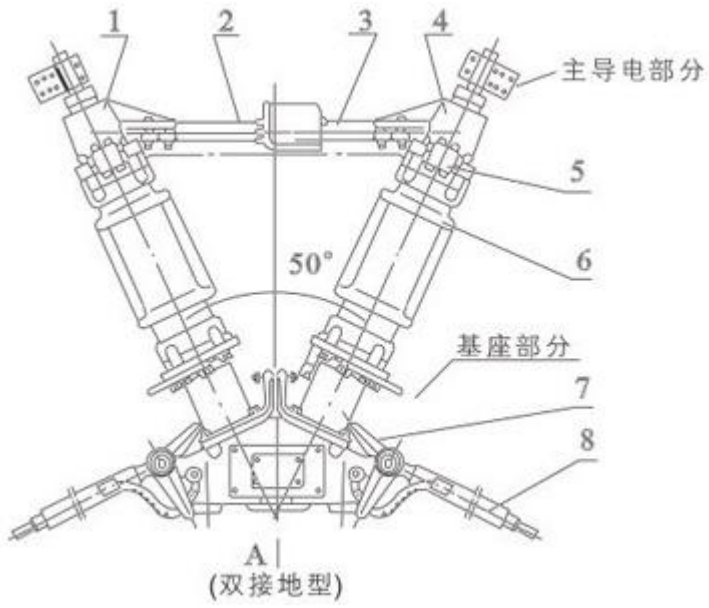
Environment condition

- Ambient temperature: max +40°C min -25°C
- Altitude: ≤1000m
- Wind pressure: ≤700Pa (equals to wind speed 34m/s)
- Air contamination degree: IV degree
- Earthquake intensity: ≤8 degree
- No corrosive or flammable gas, no frequent violent vibration

Technical Data

| | | | | | |
|----|---|--------------------------|---------------------|-----------|-----------|
| 1 | Rated Voltage (kV) | | 40.5 | 126 | 252 |
| 2 | 1min power frequency withstand voltage (Effective value) kV | To Ground | 95 | 230 | 460 |
| | | Between Fracture | 115 | 245 | 460+145 |
| 3 | Lightning Impulse withstand voltage (Peak value) kV | To Ground | 185 | 550 | 1050 |
| | | Between Fracture | 215 | 630 | 1050+200 |
| 4 | Mechanical life (Times) | | 2000 | | |
| 5 | Rated Current (A) | | 630 | 1250 | 1600 2000 |
| 6 | Rated short time withstand Current (kA) | | 20 | 31.5 | 40 40 |
| 7 | Rated withstand current (Peak value) kA | | 50 | 80 | 100 100 |
| 8 | Rated connect machine load (N) | Horizontal vertical | 750 | 1000 | |
| | | Horizontal transverse | 500 | 750 | |
| | | Vertical force | 750 | 1000 | |
| 9 | Creepage distance (mm) | | 1013-2256 | 1813-2250 | 3150-3906 |
| 10 | Manual operating mechanism | Model | CS17, CS17G | | |
| | | Control loop voltage (V) | AC220, DC110, DC220 | | |
| 11 | Motor operating mechanism | Model | CJ6 | | |
| | | Motor voltage (V) | AC220, AC380, DC220 | | |
| | | Control loop voltage (V) | AC220, AC380, DC220 | | |
| | | Switching time (s) | 6±1 | | |

Outline Dimension



- 1. Connector base
- 2. Main contact
- 3. Main touch finger
- 4. Connector base
- 5. Contact touch finger
- 6. Post insulator
- 7. Limit plate
- 8. Earthing knife