

JN15-12 indoor HV earthing switch is applied to power system of rate voltage 12kV/40.5kV, and AC 50/60Hz. It is suitable for various types HV switchgear for earthing protection.

The whole earthing switch consists of chassis, supporting insulator, main axis, main blade, fast spring, fixed and moving contact. Additional electronic display is also available according to the requirement. It conforms to GB1985 AC HV disconnect switch and earth switch, relative standards IEC60129 and passes KEMA test

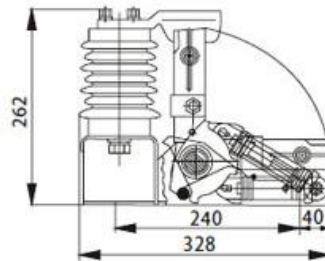
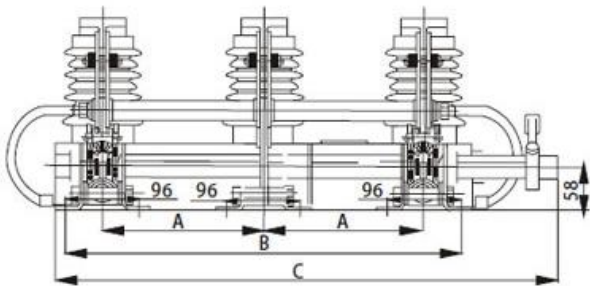
Environment condition

- Ambient temperature: -25°C~+40°C
- Altitude: ≤1000m
- Relative humidity: monthly average ≤90%; daily average: ≤95%
- Earthquake intensity: ≤8 degree

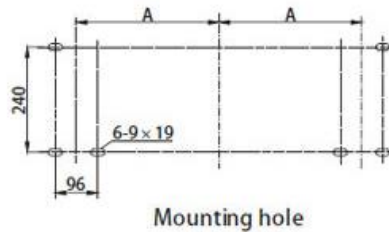
Technical Data

Rated voltage (kV)		12	40.5
Rated short-time withstand current (thermal stability) (kA)		31.5,40	31.5
Rated short-circuit duration (s)		4	4
Rated short-circuit making current (kA)		80,100,125	80
Rated peak withstand current (dynamic stability) (kA)		80,100,125	80
Central distance between poles (mm)		150,165,210,230,250,275	350,385,460
Rated insulation level	1min.PF withstand voltage (kV)	42/49	95
	Lightning impulse withstand voltage (kV)	75/85	185
Mechanical lift (Times)		2000	

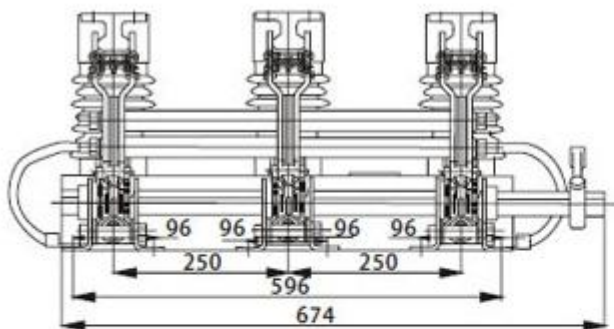
Outline Dimension



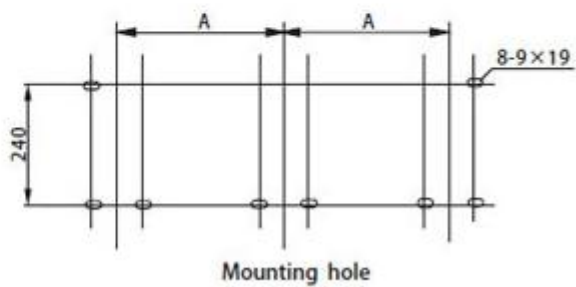
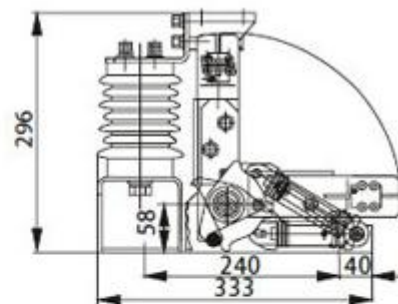
Model	A	B	C
JN15-12/31.5-150	150	396	535
JN15-12/31.5-165	165	426	565
JN15-12/31.5-210	210	516	655
JN15-12/31.5-230	230	556	710
JN15-12/31.5-250	250	596	760
JN15-12/31.5-275	275	646	810



JN15-12/31.5 E arthing switch



Model	A	B	C
JN15-12/40-210	210	516	655
JN15-12/40-230	230	556	710
JN15-12/40-250	250	596	760
JN15-12/40-275	275	646	810



JN15-12/40 Earthing switch