

LW36-126,145 outdoor self-energy type circuit breaker is six sulfur hexafluoride gas as insulation and arc extinguishing medium, CT30 spring operation mechanism and the principle self-blown arc extinguishing of single variable pressure distance. The product is suitable for 126KV three-phase AC 50HZ power system, which is used for points and load current , overload current and short circuit current.

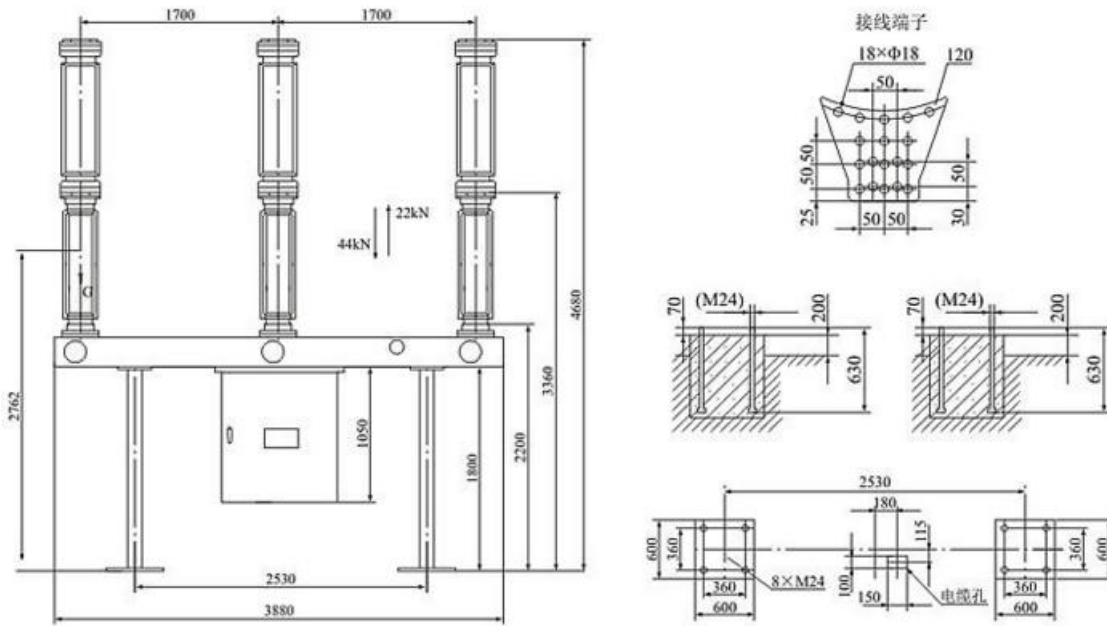
Environment Condition:

- Ambient temperature:-40°C ~+40°C
- Altitude:≤2000m
- Wind pressure:≤700Pa
- Daily temperature differenc:25°C
- Icing thickness:≤10mm
- Pollution degree: III(25mm/kV).

Technical Data

Rated voltage	kV	126,145
Rated current	A	2000, 3150
Rated frequency	HZ	50
First pole to clear factor		1.5
Rated short circuit breaking current	kA	40
Rated short-circuit current (peak)	kA	100
Rated short-circuit withstand current	kA	40
Rated power frequency withstand voltage (1min)	Phase to earth	kV K·230
	Phase to phase	kV K·(230+70)
Rated lightning impulse withstand voltage	Phase to earth	kV K·550
	Phase to phase	kV K·(550+103)
Rated peak withstand current	kA	100
Rated out of step current	kA	10
Near fault current	kA	90%1K
Electrical life of rated short circuit breaking current	times	20
Rated short circuit duration	s	4
Rated line charging close current	A	31.5
Rated operation sequence		O-0.3s-CO-180s-CO35
Main circuit resistance	μΩ	≤35
Rated SF6 gas pressure	MPa	0.6
SF6 gas leakage rate	ppm	≤0.55
Moisture content of SF6 gas (V/V)		≤150
Mechanical life	Times	10000
Electric distance	Phase to earth	mm 3906/3150
	Phase to phase	mm 3906/3150
Each filled with SF6 gas quality	KG	8
Quality of each circuit breaker	KG	1700

Outline Dimension



Order instruction

- 1-The type and the specification of the circuit breaker.
- 2-Rated electrical parameter(voltage, current, rated short-circuit breaking current and so on).
- 3-Environmental condition(temperature, altitude, filth level and so on).
- 4-Rated electric parameter of control loop(rated voltage of energy storage of the opening and closing coils).
- 5-The name and the direction of the primary upper terminal .