

Description

JDZ9-35 series of indoor voltage transformer, which is the epoxy resin casting, fully enclosed post structure. It's rated frequency 50Hz or 60Hz, rated voltage of power system up to 35kV(40.5kV), for measuring current, electric energy and relay protection.

The iron core and windings of the voltage current are casting together. The types of JDZ9-35 and JDZF9-35 are single-phase transformers connected between phases to phase. The JDZF9-35 has two secondary windings and it has a energy measuring from voltage monitoring and relay protecting separately, which is made of cold rolled silicon steel sheet. This voltage transformer conforms to IEC60044-2 and GB1207-2006 standard.

Technical Data

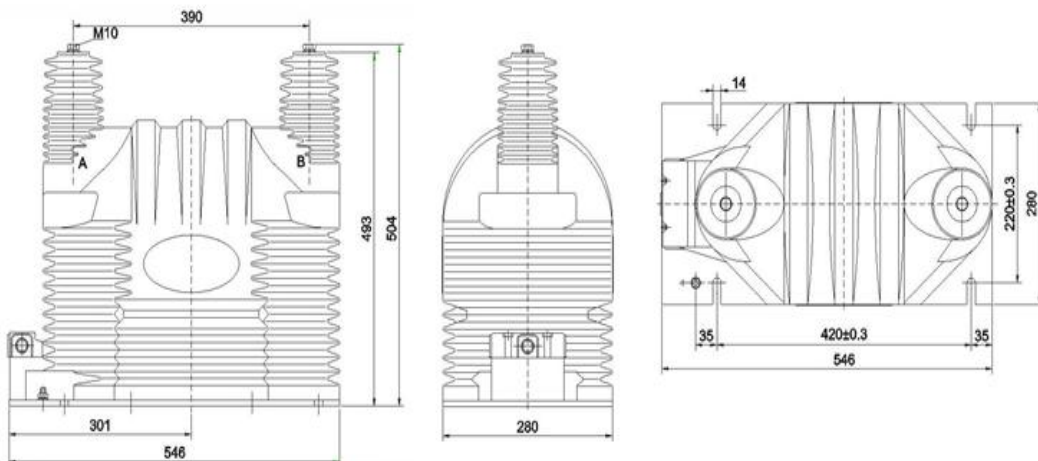
- Load Power factor: $\text{COS}\Phi=0.8$ (lagging)
- Rated frequency: 50/60Hz
- Ambient temperature: $-5^{\circ}\text{C} \sim +40^{\circ}\text{C}$
- Altitude : $\leq 2000\text{m}$

| Model | Rated voltage ratio(kV) | Accuracy classes combination | Accuracy classes and rated output (VA) | | | Thermal limit output (VA) | Rated insulation level (kV) |
|----------|-------------------------|------------------------------|--|-------|-----|---------------------------|-----------------------------|
| | | | 0.2 | 0.5 | 1 | | |
| JDZ9-35 | 35000/100 | 0.2/0.5 | 60 | 120 | 250 | 1000 | 40.5/95/185 |
| JDZF9-35 | 35000/100/100 | 0.2/0.2 0.2/0.5 | 40/40 | 80/80 | 250 | 1000 | 40.5/95/185 |

Note:

We can also manufacture the transformers with other specifications as the detailed request.

Outline Dimension



Send a inquiry